

BUMA-TA®

# CERALASTIC

Tile adhesive additive

In compliance with European standard

EN 12004:2017

**C2S1**

Cementitious adhesive for ceramic tiles

High flexibility

High tensile strength

Good impact resistance

For extra heavy traffic conditions



**BUMATECH CO., LTD**

Factory: 820 Chanh Hamlet, Duc Lap Ha, Duc Hoa, Long An Province

Telephone: 028.3868 3803

Email: [info@bumatech.com.vn](mailto:info@bumatech.com.vn)

Website: [www.bumatech.com.vn](http://www.bumatech.com.vn)

**PRODUCT DESCRIPTION**

**Ceralastic** is a specially designed latex additive for use with BUMATECH C1 tile adhesive to make a product at high bonding strength and more flexible adhesive, classified C2S1 according to TCVN 7899-1:2008, EN12004-1:2017 and zero VOC certification

**USES**

Use in replace of water when mix with **BuMaEco**. Tile adhesive additive **Ceralastic** will increase bonding and flexible strength for tile adhesive. C1 tile adhesive mix with **Ceralastic** is suitable for ceramic, marble stone, natural stone, thin large tile, exterior, heavy traffic and vibration areas

**SUITABLE SUBSTRATES**

- Cement mortar beds
- Cement plaster
- Existing tile and stone\*
- Cementitious waterproofing product\*
- Cement backer board, gypsum board with paper, moisture resistant gypsum board (Sheetrock...)\*
- Concrete\*

\* Consult Technical Services for more information.

**PACKAGING:** 25 liter/pail

**COLOUR:** Milky white

**COVERAGE:**

- Mosaic tile: 0.7 L/m<sup>2</sup>
- Medium size tile: 1.3 L/m<sup>2</sup>
- Big size tile: 2.5 L/m<sup>2</sup>

**SHELF LIFE**

Factory sealed containers of this product are guaranteed to be of first quality for two (2) year\* if stored off the ground in a dry area

\* High humidity will reduce the shelf life of bagged product

**LIMITATIONS**

- Install only at temperatures between 4°C and 35°C
- DO NOT use for moisture-sensitive stone (marble, some limestone and granite), resin-backed tiles. Instead, use suitable epoxy adhesives **Cerapoxy** or fast-setting cementitious tile adhesive **PorceRapid** in white color
- Contains Portland cement and silica sand. May irritate skin in case of prolonged contact with skin
- DO NOT take internally. Avoid breathing dust. Wear a respirator in dusty areas
- Use a white mortar when installing light-colored stones and translucent marble
- Keep out of reach of children

**INSTALLATION****Surface preparation**

- All surfaces should be between 4°C and 35°C
- Surfaces must be structurally sound, clean and free of all dirt, oil, grease, paint, concrete sealers or curing compounds
- Rough or uneven concrete surfaces should be made smooth with cementitious mortar
- All slabs must be plumb and true to within 2mm in 2m.
- Dry, dusty concrete slabs or masonry should be dampened and excess water swept off
- Concrete slabs should be damp cured and 28 days old before application. For installation on new concrete slabs after 1 day cured (Green Concrete), using **BuMaFlex** or mix **BuMaEco** with tile adhesive additive **Ceralastic**
  - Concrete surfaces must be mechanically roughened prior to application to provide mechanical bond. All substrates must have minimum ICRI CSP 2 to 3
  - Substrate deflection under all live, dead and impact loads, including concentrated loads, must not exceed limitations.
  - Tensile adhesive of applied surface must be at least 1.5MPa

**Movement Joint – TCNA detail EJ171**

Perimeter and field movement joints within a tile installation are essential and required. Please follow recommendations and guidelines as below:

- Interior: maximum of 7.6m in each direction
- Exterior: 2.4 – 3.7m in each direction
- Interior tilework exposed to direct sunlight (heat) or moisture: maximum of 3.7m in each direction
- Above-ground concrete slab structure: maximum of 3.7m each direction

All expansion, control, construction, cold, saw-cut, isolation, contraction, and seismic joints in the structure should continue through tilework, including such joints at vertical surfaces.

- Refer pictures at the end of TDS for detail

**Mortar coverage**

- Mortar coverage must be sufficient to prevent cracks resulting from voids in the setting bed
- Mortar coverage is to be evenly distributed to support edges and corners
- Choose a typical notched trowel to achieve 100% mortar contact to both the tile and substrate.
- It may be necessary to back-butter tiles in order to reach requirement

**Mixing**

- Pour 7.5 – 8.3L of **Ceralastic** into a clean pail.
- Gradually add 25kgs **BuMaEco** while slowly mixing
- Use a low-speed mixing drill (about 300-600 rpm). Mix thoroughly until mixture becomes a smooth, homogenous. Avoid prolonged mixing

- Let mixture stand (“slake”) for 3 - 5 minutes, remix
- During application time, if mixture becomes heavy or stiff, remix without adding more water

#### Application

- Use flat side of the trowel, pressing firmly to work into surface
- Apply additional mortar, combing it in a single direction with the trowel’s notched side
- Spread mortar only in small area (1 - 2m<sup>2</sup>) adequately to install tiles before it skins over, cause of de-bonding problem
- Place the tiles firmly into the wet mortar. Push the tiles back and forth in a direction perpendicular to trowel lines, to collapse the mortar ridges and to help achieve maximum coverage. Ensure proper contact between mortar, tile and substrate by periodically lifting a few tiles to check for acceptable coverage
- Remove excess mortar from the joint areas so that at least 2/3 of the tile depth is available for grouting

#### Grouting

- Grout installation after a minimum of 24 hours curing time. Grout with UnSanded Grout **Ceracolor** (mix with water or **Ceracolor Admix**), **Ceracolor USG**, **Ceracolor USG EXTRA**, Sanded Grout **Ceracolor SG** or epoxy grout **Cerapoxy**.
- Refer tile grout technical datasheet for more information and guide

#### Protecting new tilework

- To avoid damage to finished tilework, schedule floor installation to begin only after all structure work, building enclosure, and overhead finishing work, such as ceilings, painting, mechanical work, are completed
- Keep all traffic off finished tile floors until they have fully cured. Builder shall provide up to ¾” thick plywood or OSB protection over non-staining Kraft paper to protect floors after installation materials have cured.
- Covering the floor with polyethylene or plywood in direct contact with the floor may adversely affect the curing process of grout and

#### Cleaning

- Due to high adhesion strength of this product (even on metals), tools should be washed before mixture becomes harden
- Once mixture setting, cleaning can only be carried out by mechanical method

#### SAFETY PRECAUTIONS

- In case of contact with the eyes, rinse with running water (10-15min)
- Wear protective gloves, clothing and eyes and face protection.

#### DISCLAIMER

- Technical details and recommendations contained in this product datasheet correspond to the best of our knowledge and experiences at the time of printing
- These detail offered for user’s consideration and evaluation. It is the responsibility of the user to conduct their own tests to validate the suitability of the products for their requests
- Technical details and recommendations can be changed by site condition and workmanship of applicators.
- As we have no control over site conditions and the execution of the work, we accept no liability for any loss or damage which may rise as a result thereof. We also reserve the right to update the information at any time without prior notice to you to reflect our ongoing research and development program
- The newest technical data sheet will be supplied upon user request

#### TECHNICAL SERVICES/ AVAILABILITY

Information is available by calling

#### **BUMATECH CO., LTD**

**Office:** 154/1/5 Cong Lo, Ward 15, Tan Binh District, Ho Chi Minh City

**Factory:** 820 Chanh Hamlet, Duc Lap Ha Ward, Duc Hoa District, Long An Province

Technical : 028. 3910 0814

Sale : 028. 3868 3803

Email : [info@bumatech.com.vn](mailto:info@bumatech.com.vn)

Website : [www.bumatech.com.vn](http://www.bumatech.com.vn)

## PRODUCT PERFORMANCE PROPERTIES

Test	Test Method	Specification	Result
Tensile adhesion strength	TCVN 7899/ EN 1348	$\geq 1.0 \text{ N/mm}^2$	$\geq 1.5 \text{ N/mm}^2$
Tensile adhesion after water immersion	TCVN 7899/ EN 1348	$\geq 1.0 \text{ N/mm}^2$	$\geq 1.2 \text{ N/mm}^2$
Tensile adhesion after heating ageing	TCVN 7899/ EN 1348	$\geq 1.0 \text{ N/mm}^2$	$\geq 1.0 \text{ N/mm}^2$
Open time (20 mins)	TCVN 7899/ EN 1346	$\geq 0.5 \text{ N/mm}^2$	$\geq 0.5 \text{ N/mm}^2$
Transverse deformation	TCVN 7899/ EN 1348	$\geq 2.5\text{mm}$	$\geq 2.5\text{mm}$
Porcelain tile shear strength	ANSI A118.4	$\geq 1.38 \text{ N/mm}^2$	$\geq 1.50 \text{ N/mm}^2$
VOC content	USEPA Method 24	$\leq 65 \text{ g/l}$	0 g/l
Pot life (29°C)	n/a	n/a	45 minutes
Adjusting time	n/a	n/a	05 minutes
Time before grouting	n/a	n/a	24 hours

Specifications subject to change without notification. Results shown are typical but reflect test procedures used. Actual field performance will depend on installation methods and site conditions

## INSTALLATION GUIDE



Prepare and check substrate



Pour clean water into mixing pail



Slowly pour tile adhesive and mix



Wait for all chemicals react



Apply adhesive to substrate



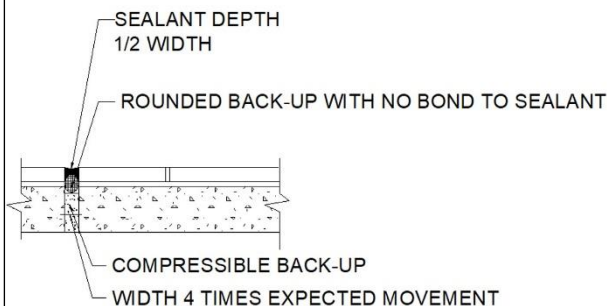
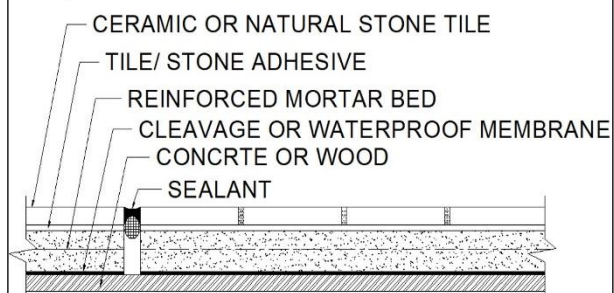
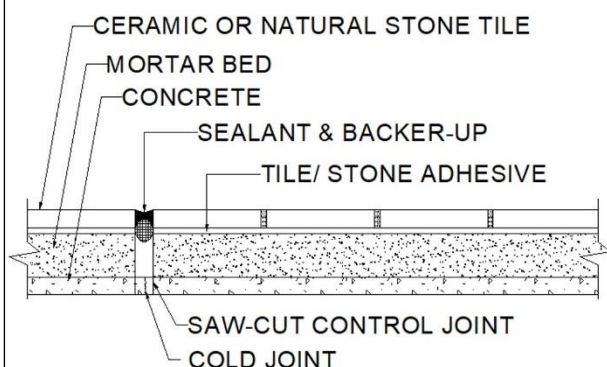
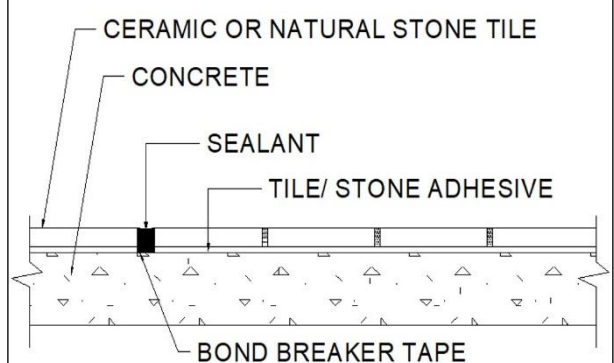
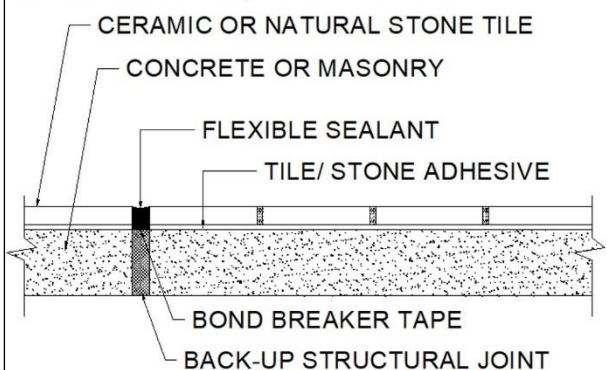
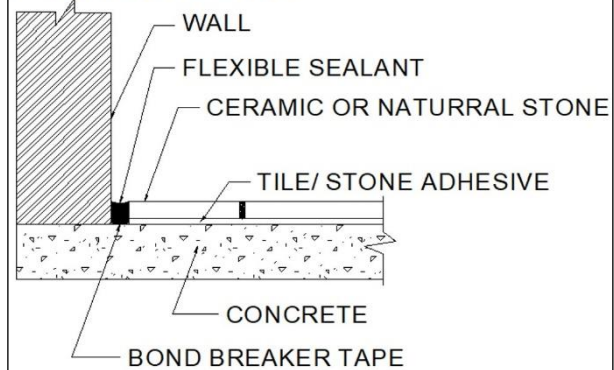
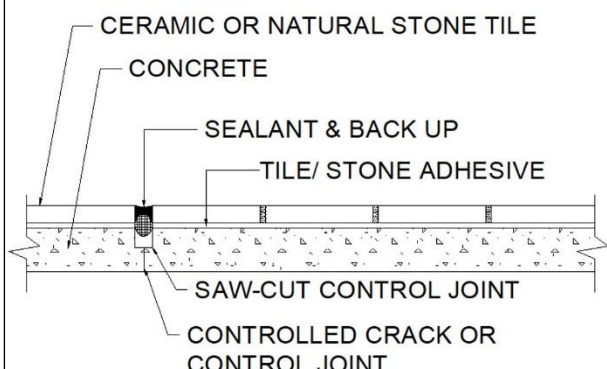
Combing adhesive in a single direction



Back-butter tiles with adhesive



Place tile firmly into wet adhesive

**EJ171-17****Expansion Joint****EJ171C-17****Expansion Joint****EJ171A-17****Construction Joint****EJ171F-17****Generated Movement Joint****EJ171D-17****Isolation/ Expansion Joint****EJ171G-17****Perimeter Joint****EJ171B-17****Construction Joint****EJ171I-17****Perimeter Joint**